



Nursing: The Transfer Option

SANTA MONICA COLLEGE

Presenter: Janet Robinson, Ed.D. | Counselor

Guest Presenter: Joan Kang, M.Ed. | Sr. Career Services Advisor



Workshop Overview

- Programs and Pathways to R.N. Licensure
- Prerequisites to Apply
- Requirements for Admission
- Job Market and Career Services Resources
- Helpful Resources
- Careers in Health Care/Scholarships
- Copies of the presentation are online at the smc.edu/workshops website

Programs and Pathways to Registered Nursing Licensure

ADN- Associate Degree in Nursing

Many community colleges offer programs! Including Santa Monica College. Students can continue to BSN program once they complete ADN and become an RN.

BSN- Bachelor of Science in Nursing

There are TWO options when applying to BSN programs:

- Pre-Licensure Route (NO RN/ ADN completed)
- Post- Licensure Route (RN/ ADN to BSN)

MSN- Master of Science in Nursing

Also TWO options when applying to MSN programs:

- Pre-Licensure Route - Entry Level Master's Program (ELM) (Any BA/BS to MSN)
- Post Licensure Route (BSN to MSN)

Research which program best fits you!

RN.CA.GOV

[Nursing CAS](#)

[Nursing Transfer Workshop Website](#)



Do some students prepare to apply to apply for both ADN and BSN programs? YES! You will need to do thorough research and compare the requirements (general education and major preparation courses) for all the programs you are applying for.

All these Pre - Licensure Paths prepare for R.N. licensure!



ADN- Associate Degree in Nursing

Prerequisites + 2 years =
RN Licensure



BSN- Bachelor of Science in Nursing

Prerequisites + Transfer Requirements + 3 years
= RN Licensure



MSN- Master of Science in Nursing

Bachelor's Degree + Prerequisites + 2 years =
RN Licensure



You can check out
NCLEX pass rates by
program online at
n.ca.gov

Required Prerequisites

- Varies by program (ADN, BSN or MSN) and varies by college or university
 - Criteria for Nursing Programs ([Nursing: Transfer Option](#))
 - SMC's ADN Program (www.smc.edu/nursing)
 - Articulation (Begin your research early!)
 - www.assist.org (CCC/ CSU/ UC)
 - [Health Sciences Advisement Guide](#)
 - Nursing Program Websites
- Recency - varies by program. Most prerequisites need to be current (within 5 years) - as well as some GE courses at CSUs.
- Repetition - is repeating prerequisites okay?
 - Depends on program
 - Look closely at repetition policies for Ws, Ds, and Fs - policy for a "W" and "EW" vs "F" may be different.
- Number of Times you can Apply - varies by programs. Some will only allow students to apply once, twice, unlimited, etc.



When will you plan to take your prerequisites courses? Semester or Intersession? Balance your course load each semester. Meet with a Counselor to assist with your educational plan. Take advantage of FREE tutoring offered at SMC - www.smc.edu/tutoring



Admissions Requirements

- **NOTE:** This is **NOT** a comprehensive list and varies by program/school
- Common Science Courses: Chemistry, Human Anatomy, Human Physiology and Microbiology
- Other Major Preparation Courses May Includes : Statistics, Sociology, Lifespan Psychology, and English Composition
- General Education Courses
- GPA (Prerequisites, cumulative, transferable)
- Prerequisites (repetition and completion)
 - Example, for Fall 2024 admissions, aim to complete by major prep courses by Fall 2023.
- Supplemental Applications
 - Allied Health Experience
 - AA/ AS Degree Completion
- Nursing Entrance Exam Score(s) - what type of exam? TEAS, NLN-Pax, or others?
- Criminal Background Check and Drug Test



Begin your research on all requirements early for **each** nursing program/school! Additional exploratory preparation courses include Biology 2 (Human Biology)- which could be completed before Anatomy. Also, Health 61 (Medical Terminology).

Job Market and Career Resources



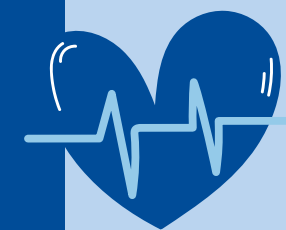
RN jobs will have posted degree and/ or experience requirements

What are they requiring? What positions require ADN, BSN, MSN degrees?



Volunteering Opportunities

UCLA Care Extender Program, UCLA Volunteer Center, Cedars Sinai TCAB, Kaiser, and many more.



Career Services Center

They have a wealth of resources!



Make Connections Early! Through networking, student clubs, volunteer work, or working in the field. SMC's Noncredit Program offers a FREE Certified Nursing Assistant Pre Certification Program.

[CNA Pre-Certification Program](#)



Gaining Experience

Healthcare Options

01

UCLA

- [Care Extender Program](#)
- [Ronald Reagan - Student Program](#)
- [Santa Monica - Student Program](#)

02

Cedars Sinai

- [Medical Center - Transforming Care at Bedside \(TCAB\)](#)
- [Marina Del Rey - TCAB](#)

03

California Hospital Medical Center

- [Dignity Health Adult Volunteers](#)

04

Kaiser Permanente

- [Los Angeles Medical Center](#)
- [West Los Angeles Medical Center](#)

Why Meet with Joan Kang?

1

Share Specific Ways You Can Gain and Show Experience

- **Volunteer, Research, Internship**
- **On-Campus Employment**
- **Off-Campus Employment**
- **Student Leadership**
- **Relevant Coursework**

2

Prepare You For the Search Process

- **Resume/CV and Cover Letter Education and Critiquing**
- **Networking and Interviewing Tips and Practice**
- **Demystifying the Job, Volunteer, Research, and Internship Search Process**

Meet Joan Kang, M.Ed.

H/W and STEM Senior Career Services Advisor



Photo of Joan Kang

Appointment Schedule

Monday through Friday (1-Hour Appointments)

First Appointment at 8:00 am PT

Last Appointment at 3:00 pm PT

Best Ways to Reach Me: Email (Use SMC email)

Office Line/Voicemails: Have access to using direct office line, but majority of calls are forwarded to voicemail when in appointments and/or meetings.

Contact Joan Kang

SMC Email/Teams ID: kang_joan@smc.edu

Office Number: (310) 434-3962

Location: Student Services Center (1st Floor)

Department: Career Services Center



Career Resource Websites



01

[Resumes and Cover Letters](#)

02

[Health/Wellness Experience List](#)

03

[On-Campus Involvement](#)

04

[Career Services Center Homepage](#)

www.smc.edu/careerservices

Nursing and RT Upcoming Info Sessions



SANTA
MONICA
COLLEGE

NURSING & RESPIRATORY CARE PROGRAM INFORMATION SESSIONS

SPRING 2024

— Date & Time —

MON, 2/26/24, 3:00PM: NURSING
THU, 3/14/24, 12:00PM: RESPIRATORY CARE
TUE, 3/26/24, 12:00PM: NURSING
MON, 4/1/24, 3:00PM: RESPIRATORY CARE
THU, 4/25/24, 12:00PM: NURSING
MON, 5/6/24, 12:00PM: RESPIRATORY CARE (ON ZOOM)
MON, 5/13/24, 3:00PM: NURSING
TUE, 5/21/24, 3:00PM: RESPIRATORY CARE
THU, 5/30/24, 12:00PM: NURSING

All sessions currently in-person (unless noted otherwise) at the Bundy Campus. Check-in for the session: 3rd floor, room 319.

How to Sign Up for an Information Session

1. Log In to Corsair Connect from the SMC Homepage
2. On the left-hand side menu click on "Counseling & Special Programs"
3. On this page, scroll down to "Information Sessions" and click on "Nursing Program Information Session" or "Respiratory Care Program Information Session"
4. Select the date and time you would like to attend

<https://www.smc.edu/academics/academic-departments/health-sciences/nursing/information-sessions.php>

Online Resources to Begin Your Research!

California Board of Registered Nursing

<https://www.rn.ca.gov/>

CA NCLEX Pass Rates

<https://www.rn.ca.gov/education/passrates.shtml>

Nursing Programs

<https://www.rn.ca.gov/education/rnprograms.shtml>

Certified Nursing Assistant (CNA)

[CA Department of Public Health](#)
[SMC's Noncredit CNA Program](#)

CSU Nursing Programs

[CSU Nursing Programs](#)

National Student Nurses' Association

National Student Nurses' Association:

<https://www.nsna.org/>



Careers in Health Care/Scholarships

Explore Health Careers

<http://www.explorehealthcareers.org/en/home>

SMC Student Clubs

[Scroll down to Health & Wellness](#)

Allied Health Programs

[Within CA Community Colleges](#)

Additional SMC Career Services
Resources

[Career and Major Search](#)
[Health & Wellness Presentation](#)

Cultivating Interest in Research Careers

[CIRC Program](#)

National Health Service Corps
Scholarship Program (NHSC SP)

[HRSA Scholarship](#)



Associate Degree in Nursing at SMC



Attend Information Session

Registration is required!

Visit www.smc.edu/nursing for more details

Health Sciences Counseling

There is a team of Health Sciences Counselors available to meet you.

Visit [Health Sciences Counseling](#) for details on how to book an appointment.



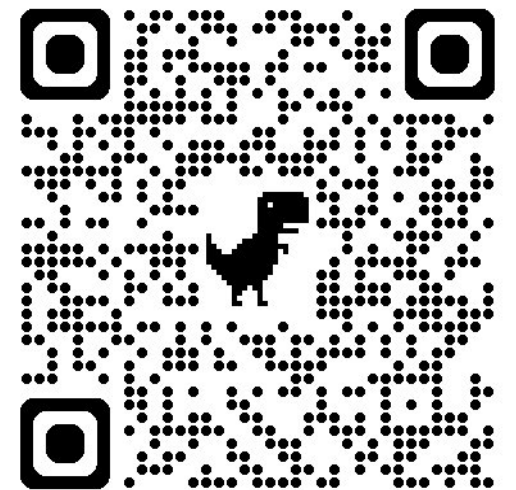
Reminder! Starting off with an Associate Degree Nursing program can still get you to a Bachelor of Science in Nursing program. Referred to as ADN/RN to BSN route. Some "jumpstart" programs may also be available.



Thank you for attending!

- Start your research on Nursing Programs (early and often!)
- Meet with a Counselor for educational planning
- Begin to develop your network and learn more about Nursing/Healthcare opportunities

[Join SMC's Transfer Services Canvas Shell](#)



Common Terms in the...

ADN = Associate Degree in Nursing

BSN = Bachelor of Science in Nursing

MSN = Master of Science in Nursing

NCLEX = National Council Licensure
Examination (NCLEX-RN®)

RN = Registered Nurse

BA = Bachelor of Arts

BS = Bachelor of Science

Nursing Application Journey

Pre-Licensure Program = Program for
students that are NOT a Registered
Nurse (R.N.) already.

Post-Licensure Program = Program for
students that are a Registered Nurse
(R.N.).

ELM = Entry Level Master's Program
intended for students that are NOT RNs
already. BA/BS to MSN



Common Terms in the...

Recency = Time limit/expiration of courses.

Example: Science courses must be completed within the last 5 years. Any science courses completed more than 5 years, will need to be repeated.

Repetition = Repeating prerequisites courses.

Nursing Application Journey

Nursing Admissions Assessments:

TEAS

HESI

NLN-PAX (SMC)

*Each program will have different requirements for Admissions Assessment test. Be sure to research what is required for each school.

